

KEEBOX



Quick Installation Guide

Guía de instalación rápida

Wireless 150 N USB Adapter
W150NU

Contents

Español	1
1. Antes de iniciar	1
2. Cómo se instala	2
3. Cómo usar el adaptador inalámbrico	4
Troubleshooting	6
Wireless Tips	7

Contenidos del Paquete

- W150NU
- CD-ROM (Herramienta y controladores)
- Guía de instalación rápida

Requisitos del sistema

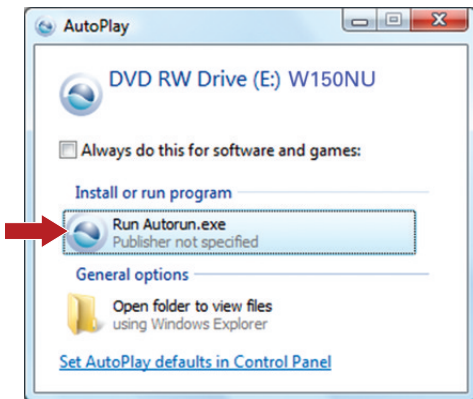
- Puertos USB: 2.0
- Unidad de CD-ROM

Compatible con sistemas operativos:	CPU	Memoria
Windows 7 (32/64-bit)	1GHz o superior	1GB RAM o superior
Windows Vista (32/64-bit)	800MHz o superior	512MB RAM o superior
Windows XP (32/64-bit)	300MHz o superior	256MB RAM o superior

Cómo se instala

⚠ ¡Importante! NO instale el W150NU hasta que no se le indique.

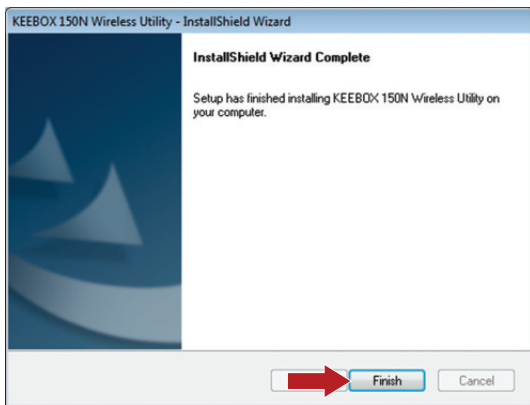
1. Introduzca el CD-ROM del controlador y de la herramienta en la unidad de CD-ROM de su PC.
2. Haga clic en Run Autorun.exe (sólo para Windows 7/Vista).



3. Haga clic en Install Utility & Driver (Instalar el controlador y la utilidad)



4. Siga las instrucciones del InstallShield Wizard (asistente de instalación) y luego haga clic en Finish (Finalizar).



5. Conecte el adaptador inalámbrico a un puerto USB disponible de su PC.



5. Los archivos controladores se instalarán automáticamente.

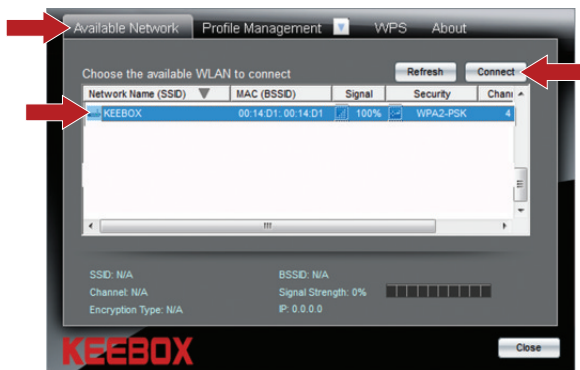
La instalación ha sido completada.

Cómo usar el adaptador inalámbrico

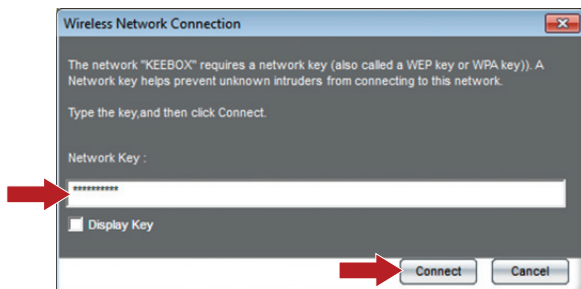
1. En la esquina derecha inferior de la pantalla, haga doble clic en el icono KEEBOX W150NU Wireless Utility (Herramienta Inalámbrica de KEEBOX W150NU).



2. Haga clic en Available Network (Red disponible), luego seleccione el nombre de red (SSID) de su red inalámbrica y después haga clic en Connect (Conectar).



3. Si habilita la encriptación en su punto de acceso o enrutador inalámbrico, introduzca la clave de red (encriptado) y luego haga clic en Connect (Conectar).



La configuración inalámbrica ha finalizado.

Para obtener información más detallada sobre la configuración así como de las configuraciones avanzadas del W150NU, por favor consulte la sección de resolución de problemas, el CD-ROM de la Guía del Usuario, o el sitio Web de KEEBOX en <http://www.KEEBOX.com>.

Troubleshooting

1. I inserted the Utility & Driver CD-ROM into my computer's CD-ROM Drive and the installation menu does not appear automatically. What should I do?

1. For Windows 7, if the installation menu does not appear automatically, click on the Windows Icon on the bottom left hand corner of the screen., click the "Search programs and files" box, and type D:\autorun.exe, where "D" in "D:\autorun.exe" is the letter assigned to your CD-ROM Drive, and then press the ENTER key on your keyboard.
2. For Windows Vista, if the installation menu does not appear automatically, click Start, click the Start Search box, and type D:\autorun.exe where "D" in "D:\autorun.exe" is the letter assigned to your CD-ROM Drive, and then press the ENTER key on your keyboard.
3. For Windows XP, if the installation menu does not appear automatically, click Start, click Run, and type D:\autorun where "D" in "D:\autorun.exe" is the letter assigned to your CD-ROM Drive, and then press the ENTER key on your keyboard.

2. I completed all the steps in the quick installation guide, but my Wireless USB Adapter is not connecting to my access point or wireless router. What should I do?

1. Verify that the Network Name (SSID) matches your wireless router or access point's SSID.
2. Please check with your network administrator for security key in order to access a secured wireless access point or router. Please refer to the User's Guide for more information regarding wireless network security.
3. Double-click the KEEBOX W150NU Wireless Utility icon, click Available Network and then click Refresh to check and see if there are any available wireless networks listed.
4. Please refer to the Wireless tips section if you continue to have wireless connectivity problems.

3. Windows is unable to recognize my hardware. What should I do?

Access your device manager to make sure the adapter is installed properly. If you see a networking device with a yellow question mark or exclamation point, you will need to reinstall the device and/or the drivers.

1. To access the device manager on Windows 7, click on the Windows icon on the bottom left-hand corner, click Computer, click System Properties and then click Device Manager.
2. To access the device manager on Windows Vista, right-click Computer, click Properties and then click Device Manager.
3. To access the device manager on Windows XP/2000, right-click My Computer, click Properties, click the Hardware tab, and then click Device Manager.

If you still encounter problems or have any questions regarding the W150NU, please refer to the User's Guide included on the Utility & Driver CD-ROM or contact KEEBOX Technical Support.

Wireless Tips

The following are some general wireless tips to help minimize the impact of interference within an environment.

Assign your network a unique SSID

Do not use anything that would be identifying like “Smith Family Network”. Choose something that you would easily identify when searching for available wireless networks.

Do not turn off the SSID broadcast

The SSID broadcast is intended to be on and turning it off can cause connectivity issues. The preferred method of securing a wireless network is to choose a strong form of encryption with a strong and varied encryption key.

Note: after setting up the SSID, encryption type and encryption key/passphrase, please make a note of them for future reference. You will need this information to connect your wireless computers to the wireless router/access point.

Change the channel

Most wireless access points and routers are defaulted to channel 6. If you have a site survey tool that will display the channels you can plan your channel selection around neighboring access points to minimize interference from them. If your site survey tool does not display the channel try using channels 1 or 11.

If using 802.11n you should be securing the network with WPA2 security.

Note: Due to Wi-Fi certification considerations if you choose WEP, WPA or WPA2-TKIP encryption this device may operate in legacy wireless mode (802.11b/g). You may not get 802.11n performance as these forms of encryption are not supported by the 802.11n specification.

Please also make sure that the wireless hardware is not placed in any type of shelving or enclosures

Avoid stacking hardware on top of each other to prevent overheating issues

Maintain enough free space around the hardware for good ventilation and airflow. There should also be plenty of free space around the antennas to allow the wireless signal to propagate.

There are a number of other environmental factors that can impact the range of wireless devices

1. Adjust your wireless devices so that the signal is traveling in a straight path, rather than at an angle. The more material the signal has to pass through the more signal you will lose.
2. Keep the number of obstructions to a minimum. Each obstruction can reduce the range of a wireless device. Position the wireless devices in a manner that will minimize the amount of obstructions between them.

3. Building materials can have a large impact on your wireless signal. In an indoor environment, try to position the wireless devices so that the signal passes through less dense material such as dry wall. Dense materials like metal, solid wood, glass or even furniture may block or degrade the signal.
4. Antenna orientation can also have a large impact on your wireless signal. Use the wireless adapter's site survey tool to determine the best antenna orientation for your wireless devices.
5. Interference from devices that produce RF (radio frequency) noise can also impact your signal. Position your wireless devices away from anything that generates RF noise, such as microwaves, HAM radios, Walkie-Talkies and baby monitors.
6. Any device operating on the 2.4GHz frequency will cause interference. Devices such as 2.4GHz cordless phones or other wireless remotes operating on the 2.4GHz frequency can potentially drop the wireless signal. Although the phone may not be in use, the base can still transmit wireless signal. Move the phone's base station as far away as possible from your wireless devices.

If you are still experiencing low or no signal consider repositioning the wireless devices or installing additional access points. The use of higher gain antennas may also provide the necessary coverage depending on the environment.

Limited Warranty

KEEBOX warrants its products against defects in material and workmanship, under normal use and service, for the following lengths of time from the date of purchase.

W150NU – 1 Year Warranty AC/DC Power Adapter, Cooling Fan, and Power Supply carry a 1 year warranty

If a product does not operate as warranted during the applicable warranty period, KEEBOX shall reserve the right, at its expense, to repair or replace the defective product or part and deliver an equivalent product or part to the customer. The repair/replacement unit's warranty continues from the original date of purchase. All products that are replaced become the property of KEEBOX. Replacement products may be new or reconditioned. KEEBOX does not issue refunds or credit. Please contact the point-of-purchase for their return policies.

KEEBOX shall not be responsible for any software, firmware, information, or memory data of customer contained in, stored on, or integrated with any products returned to KEEBOX pursuant to any warranty.

There are no user serviceable parts inside the product. Do not remove or attempt to service the product by any unauthorized service center. This warranty is voided if (i) the product has been modified or repaired by any unauthorized service center, (ii) the product was subject to accident, abuse, or improper use (iii) the product was subject to conditions more severe than those specified in the manual.

Warranty service may be obtained by contacting KEEBOX within the applicable warranty period and providing a copy of the dated proof of the purchase. Upon proper submission of required documentation a Return Material Authorization (RMA) number will be issued. An RMA number is required in order to initiate warranty service support for all KEEBOX products. Products that are sent to KEEBOX for RMA service must have the RMA number marked on the outside of return packages and sent to KEEBOX prepaid, insured and packaged appropriately for safe shipment. Customers shipping from outside of the USA and Canada are responsible for return shipping fees. Customers shipping from outside of the USA are responsible for custom charges, including but not limited to, duty, tax, and other fees.

WARRANTIES EXCLUSIVE: IF THE KEEBOX PRODUCT DOES NOT OPERATE AS WARRANTED ABOVE, THE CUSTOMER'S SOLE REMEDY SHALL BE, AT KEEBOX'S OPTION, REPAIR OR REPLACE. THE FOREGOING WARRANTIES AND REMEDIES ARE EXCLUSIVE AND ARE IN LIEU OF ALL OTHER WARRANTIES, EXPRESSED OR IMPLIED, EITHER IN FACT OR BY OPERATION OF LAW, STATUTORY OR OTHERWISE, INCLUDING WARRANTIES OF MERCHANTABILITY AND FITNESS FOR A PARTICULAR PURPOSE. KEEBOX NEITHER ASSUMES NOR AUTHORIZES ANY OTHER PERSON TO ASSUME FOR IT ANY OTHER LIABILITY IN CONNECTION WITH THE SALE, INSTALLATION MAINTENANCE OR USE OF KEEBOX'S PRODUCTS.

KEEBOX SHALL NOT BE LIABLE UNDER THIS WARRANTY IF ITS TESTING AND EXAMINATION DISCLOSE THAT THE ALLEGED DEFECT IN THE PRODUCT DOES NOT EXIST OR WAS CAUSED BY CUSTOMER'S OR ANY THIRD PERSON'S MISUSE, NEGLIGENCE, IMPROPER INSTALLATION OR TESTING, UNAUTHORIZED ATTEMPTS TO REPAIR OR MODIFY, OR ANY OTHER CAUSE BEYOND THE RANGE OF THE INTENDED USE, OR BY ACCIDENT, FIRE, LIGHTNING, OR OTHER HAZARD.

LIMITATION OF LIABILITY: TO THE FULL EXTENT ALLOWED BY LAW KEEBOX ALSO EXCLUDES FOR ITSELF AND ITS SUPPLIERS ANY LIABILITY, WHETHER BASED IN CONTRACT OR TORT (INCLUDING NEGLIGENCE), FOR INCIDENTAL, CONSEQUENTIAL, INDIRECT, SPECIAL, OR PUNITIVE DAMAGES OF ANY KIND, OR FOR LOSS OF REVENUE OR PROFITS, LOSS OF BUSINESS, LOSS OF INFORMATION OR DATA, OR OTHER FINANCIAL LOSS ARISING OUT OF OR IN CONNECTION WITH THE SALE, INSTALLATION, MAINTENANCE, USE, PERFORMANCE, FAILURE, OR INTERRUPTION OF THE POSSIBILITY OF SUCH DAMAGES, AND LIMITS ITS LIABILITY TO REPAIR, REPLACEMENT, OR REFUND OF THE PURCHASE PRICE PAID, AT KEEBOX'S OPTION. THIS DISCLAIMER OF LIABILITY FOR DAMAGES WILL NOT BE AFFECTED IF ANY REMEDY PROVIDED HEREIN SHALL FAIL OF ITS ESSENTIAL PURPOSE.

Governing Law: This Limited Warranty shall be governed by the laws of the state of California.

Some KEEBOX products include software code written by third party developers. These codes are subject to the GNU General Public License ("GPL") or GNU Lesser General Public License ("LGPL").

Go to <http://www.KEEBOX.com/gpl> or <http://www.KEEBOX.com> Download section and look for the desired KEEBOX product to access to the GPL Code or LGPL Code. These codes are distributed WITHOUT WARRANTY and are subject to the copyrights of the developers. KEEBOX does not provide technical support for these codes. Please go to <http://www.gnu.org/licenses/gpl.txt> or <http://www.gnu.org/licenses/lgpl.txt> for specific terms of each license.

Declaration of Conformity

Company Information:

Company name:
KEEBOX, Inc.

Company Address:
P.O. Box 2290, Gardena, CA 90247-9999 U.S.A.

Product Information:

Product Description:
Wireless N 150 USB Adapter

Model Number:
W150NU

Brand name:
KEEBOX



Technical Standards:

EN 300 328	V1.7.1: 10-2006
EN 301 489-1	V1.8.1: 04-2008
EN 301 489-17	V2.1.1: 05-2009
EN 62311: 2008	
EN 60950-1: 2006	

Declaration:

The product is herewith confirmed to comply with the requirements of Directive 1999/5/EC of the Council (European Parliament) on the radio and telecommunications terminal equipment.

I hereby declare that the products and devices mentioned above are consistent with the standards and provisions of the guidelines.

Sonny Su

Full Name

June 22, 2010

Date

Director of Technology

Position

Signature

Certifications

This equipment has been tested and found to comply with FCC and CE Rules.

Operation is subject to the following two conditions:

- (1) This device may not cause harmful interference.
- (2) This device must accept any interference received. Including interference that may cause undesired operation.



Waste electrical and electronic products must not be disposed of with household waste. Please recycle where facilities exist. Check with you Local Authority or Retailer for recycling advice.



NOTE: THE MANUFACTURER IS NOT RESPONSIBLE FOR ANY RADIO OR TV INTERFERENCE CAUSED BY UNAUTHORIZED MODIFICATIONS TO THIS EQUIPMENT. SUCH MODIFICATIONS COULD VOID THE USER'S AUTHORITY TO OPERATE THE EQUIPMENT.

ADVERTENCIA

En todos nuestros equipos se mencionan claramente las características del adaptador de alimentación necesario para su funcionamiento. El uso de un adaptador distinto al mencionado puede producir daños físicos y/o daños al equipo conectado. El adaptador de alimentación debe operar con voltaje y frecuencia de la energía eléctrica domiciliar existente en el país o zona de instalación.

KEEBOX